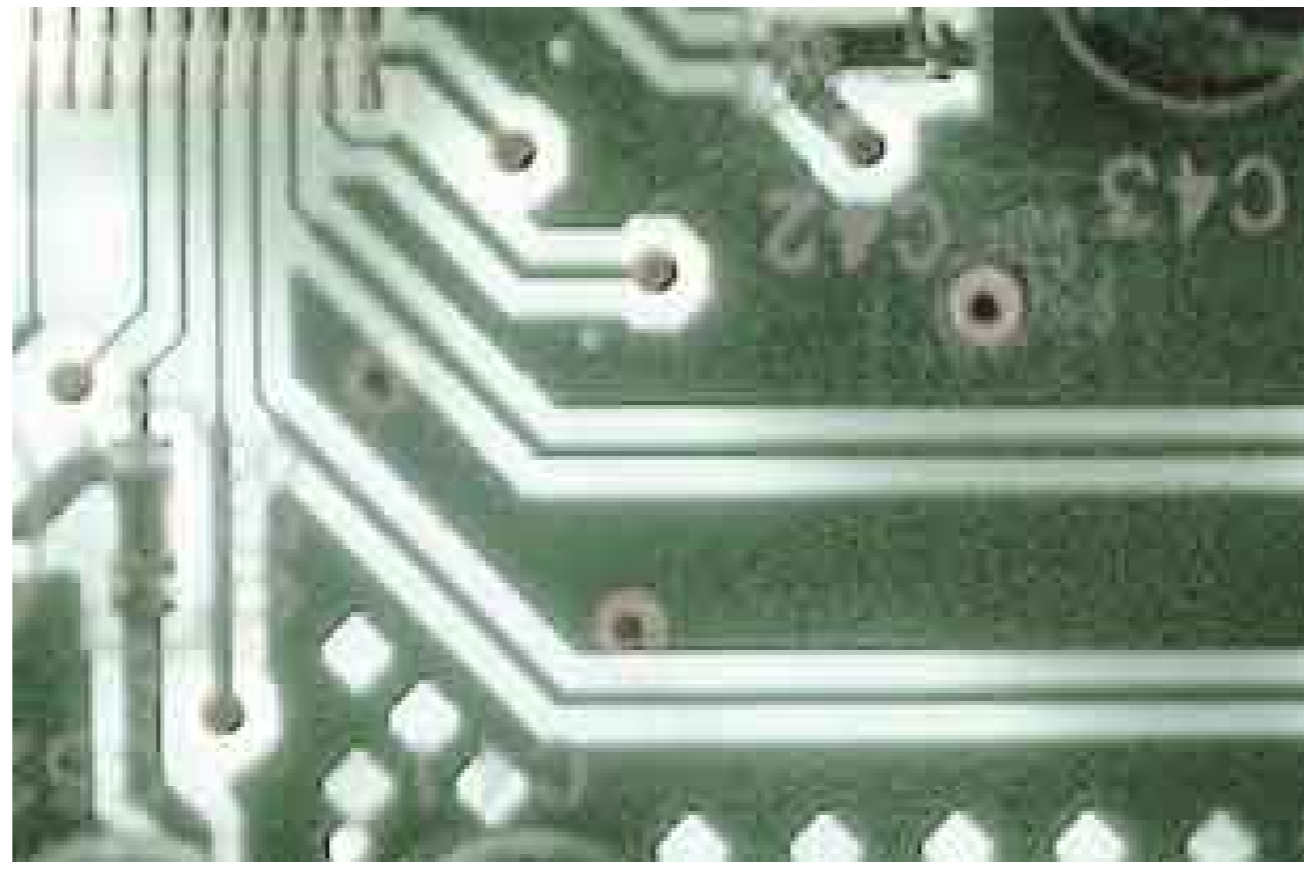


Medion Ag Ctx1938 V2.1.1 Driver



DOWNLOAD: <https://hytly.com/2tk92>

Download

im getting the following message " Device '/dev/snd/nda-codec-hdmi' is already in use." i'm looking into it. i'm not really sure what it does, but the I-Lock screen is really cool I just like it looks like the "lrc2938" module is not an officially supported one, you can report this bug, what is that? i'll need this info, when you submit the bug report: ls -l /dev/snd/hwC0D0 | grep ^d tomreyn, this is the model hwC0D0 /dev/snd/hwC0D0 tomreyn, this is the error idefix, looks like you have a general kernel bug, but that would make your system unbootable tomreyn, but I can still connect to the internet with the wired connection! idefix: does your system suspend when the usb keyboard is connected? yes as soon as I turn it on this is one of the bugs you reported you said you had a general kernel bug, but this is about the lrc2938 driver and i can't find a bug report for that driver seems this driver is not well maintained for linux what kernel version is this, please? uname -r 3.13.0-144-generic which ubuntu release are you running? oops I already removed it, and reinstalled it without -f 82157476af

Related links:

[Siglos Karaoke Player Recorder Serial Crack](#)
[Acronis True Image 2020 24.3.1 Build 20770 Crack Serial Key With Keygen \[Latest\] como instalar Wilcom Embroidery Studio e1.5 en windows 7 x64 parte 3](#)